

TECHNICAL DATA SHEET

RADIAL FAN nr. AFGG-35_16



G&G filtration CZ, s.r.o.

A Hrubínova 1903/9, 66451 Šlapanice, CZ
 IČ 05226953 IČ DPH CZ05226953
 E info@ggf.cz W www.ggf.cz

ITEM1

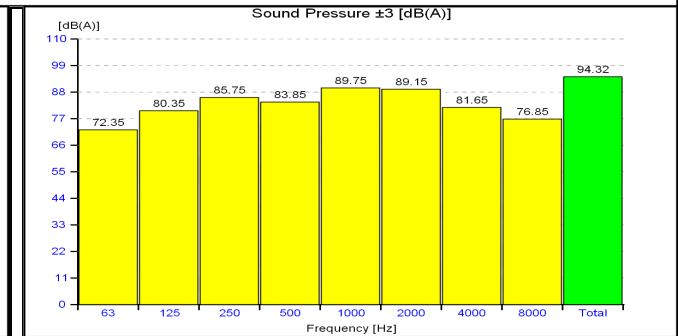
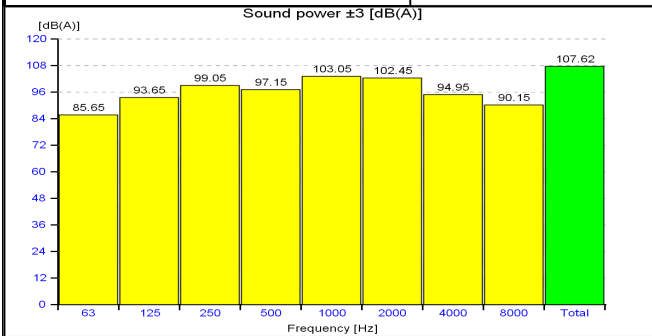
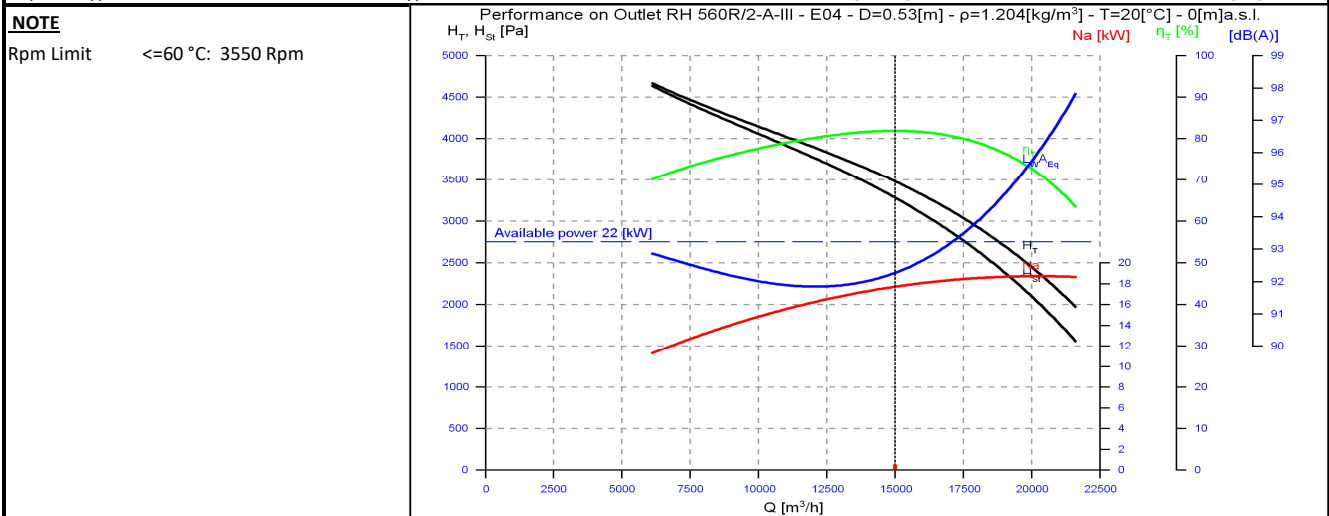
Document printed by Aeraulica - Dimensions and performances can be changed without prior notice

Type and characteristics of the requested machine		performance on		Outlet
Flow rate	15000 [m3/h]	Capacity (Normal)		13977 [Nm3/h]
Total pressure	3550 [Pa]	Static pressure		
Working fluid temperature	20 [°C]	Fluid specific weight		1.204 [Kg/m3]
Installation altitude	0 asl [m]	Specific weight std (20 [°C], 0 asl [m])		1.204 [Kg/m3]

Suggested model and effective characteristics				performance on		Outlet
Model	RH 560R/2-A-III	Execution	E04	Installation Type	A (free inlet and outlet)	
Fluid specific weight	1.204	1.204 [Kg/m3]		Revolution fan speed		2960 [rpm]
Total pressure	3479	3479 [Pa]		Orientation		RD 0
Static pressure	3282	3282 [Pa]		Sound power LwA		107.62 [dB(A)]
Flow rate	15000	15000 [m3/h]		Sound pressure at mt.1.5 1/2 sf in open field		94.32 [dB(A)]
Capacity (Normal)	13977	13977 [Nm3/h]		Pipings	s>3mm = +3dB; 1mm<s<3mm = +4,5dB; s<1mm = +6dB	
Power dem. at shaft	17.71	17.71 [kW]		Fan efficiency	Outlet	81.86 %
Motor power demand	17.71	17.71 [kW]				

Characteristics of chosen motor				Motor efficiency IEC 60034-30			PD ² impeller	3.6	kgm ²			
Code	180M02-50/std3P	shape	B3	Efficiency	92.7	93.2	92.9	PD ² needed	3.62	kgm ²		
Rated power	22.0 [kW]	n° poles	2	rpm	2950	Load	100%	75%	50%	PD ² motor	27	kgm ²

ErP 2009/125/CE Regulament (UE) N. 327/2011		Notes	
Efficiency grade	64	N	75.6
Impeller type	backward blades	Type of test	B/total
		Flow rate	15021 [m3/h]
		Pressure	3278 [Pa]
		Total efficiency	76.25 %



values of the noise of fan obtained in ambient not reverberant with inlet and outlet ducts fully insulated

TECHNICAL DATA SHEET

RADIAL FAN nr. AFGG-35_16



G&G filtration CZ, s.r.o.

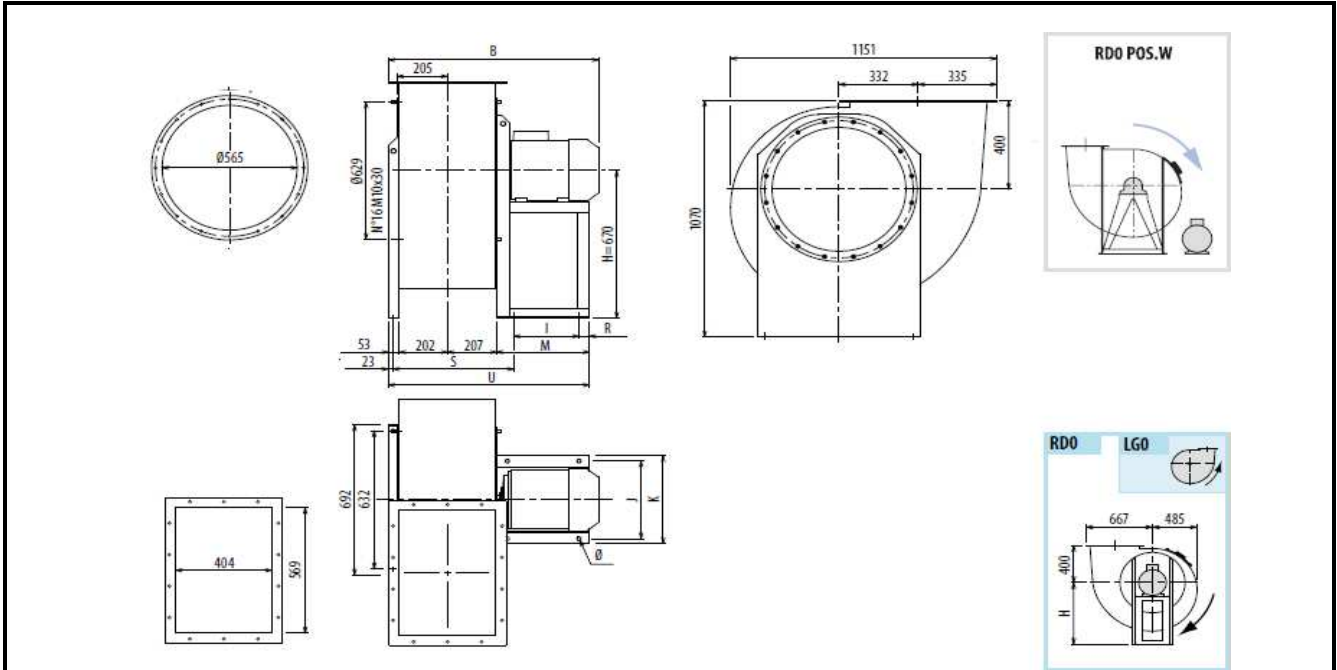
A Hrubínova 1903/9, 66451 Šlapanice, CZ

IČ 05226953 IČ DPH CZ05226953

E info@ggf.cz W www.ggf.cz

ITEM1

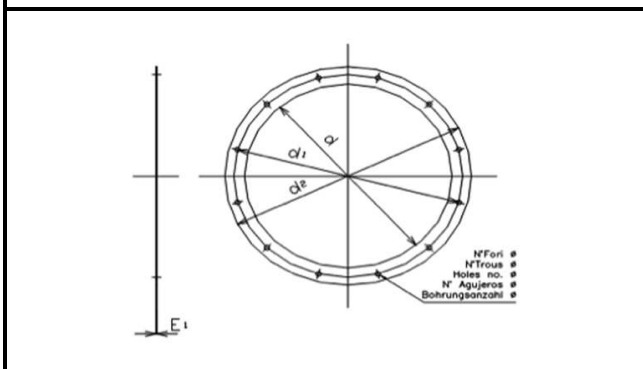
Document printed by Aeraulica - Dimensions and performances can be changed without prior notice



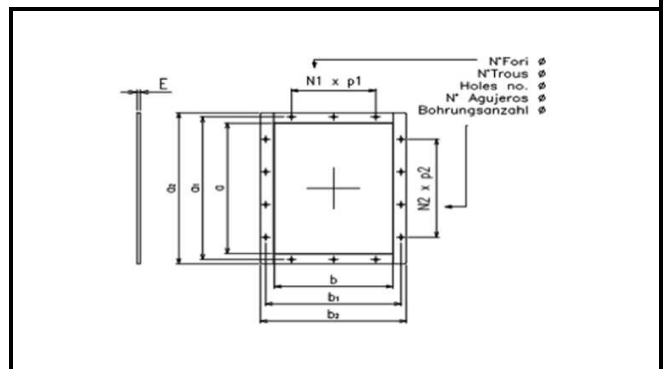
Indicative measures in the standard configuration. For detailed information contact your reference.

Indicative value of weight including standard motor.

B	I	H	H1	H2	J	K	M	R	S	U	Φ	PD2
1070	357	670	400	670	434	488	464	37	509	927	17	3,6
kg												
273												



Cod	dxn°	d1	d2	Φ	E1
0565 B	565x16	629	665	14	4



Cod	axb	a1	b1	a2	b2
0569x0404	569x404	629	464	669	504

N1xp	N2xp	n°	Φ	E
2x160	3x160	14	14	4

